

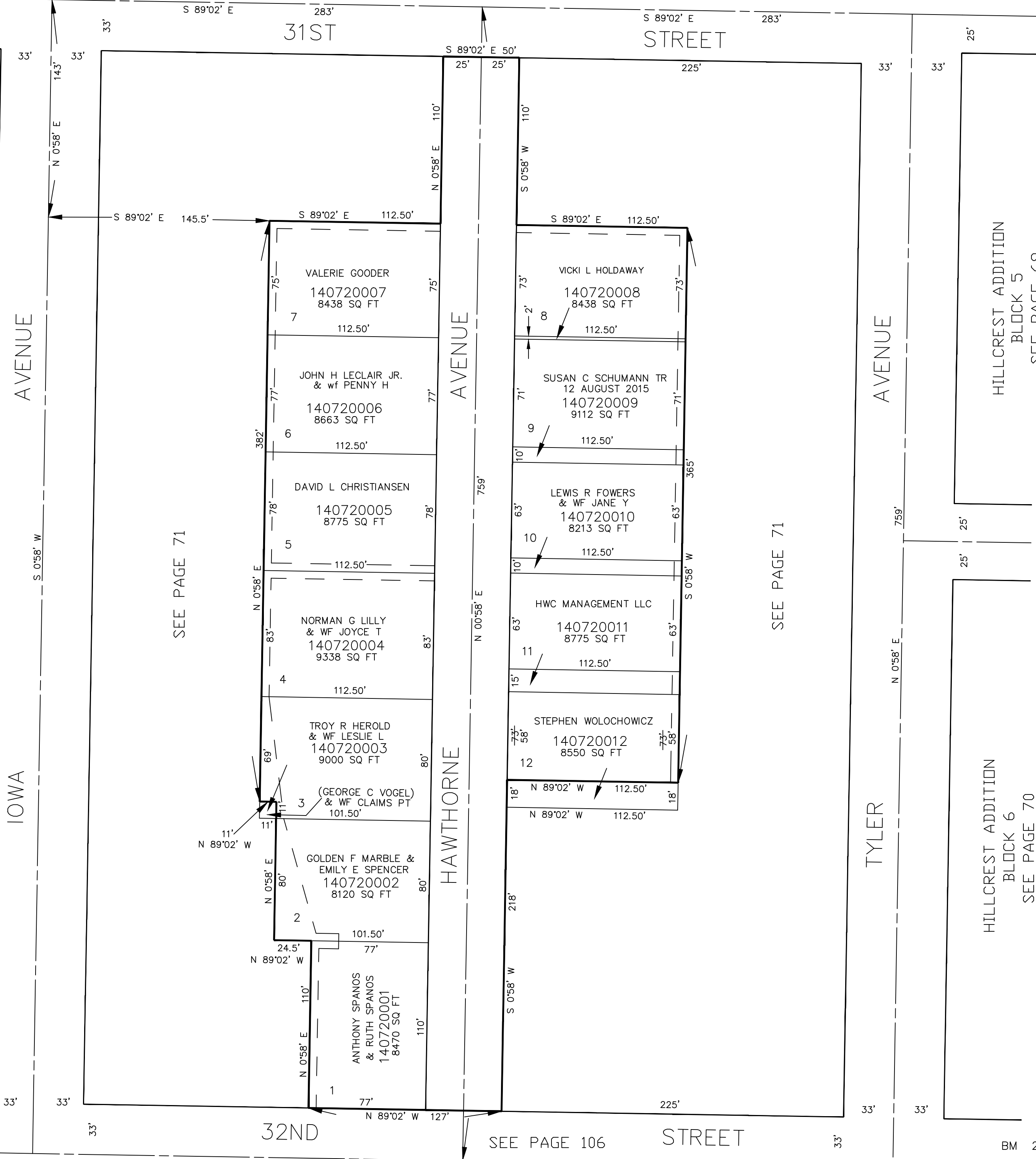
PART OF THE S.W. 1/4, SEC. 34, T.6N., R.1W., S.L.B. & M.
OAK WOOD HEIGHTS

TAXING UNIT: 25

SEE PAGE 105

IN OGDEN CITY
SCALE 1" = 50'

FOR COMPLETE ENG DATA SEE
ORIGINAL DEDICATION PLAT IN
BOOK 13, PAGE 28 OF RECORDS.



BROWNE BARR SUBDIVISION
BLOCK 1
SEE PAGE 63

HILLCREST ADDITION
BLOCK 5
SEE PAGE 69

HILLCREST ADDITION
BLOCK 6
SEE PAGE 70

5' UTILITY & DRAINAGE EASEMENTS EACH
SIDE OF PROPERTY LINES AS INDICATED
BY DASHED LINES EXCEPT AS OTHERWISE
SHOWN.